

# INSTALLATION INSTRUCTIONS

## AUTO/MANUAL SWITCH Part No. 9481A

### for Model KBAC-24D & KBAC-27D Inverters with SIAC Signal Isolator / Run Relay



#### SAFETY WARNING! Please read carefully before proceeding.

This product should be installed and serviced by a qualified technician, electrician, or electrical maintenance person familiar with its operation and the hazards involved. Proper installation, which includes wiring, mounting in proper enclosure, fusing or other overcurrent protection, and grounding can reduce the chance of electrical shocks, fires, or explosion in this product or products used with this product, such as electric motors, switches, coils, solenoids, and/or relays. Eye protection must be worn and insulated adjustment tools must be used when working with control under power. This product is constructed of materials (plastics, metals, carbon, silicon, etc.) which may be a potential hazard. Proper shielding, grounding and filtering of this product can reduce the emission of radio frequency interference (RFI) which may adversely affect sensitive electronic equipment. If further information is required on this product, contact the Sales Department.

This control contains electronic Start/Stop circuits that can be used to start and stop the control. However, these circuits are never to be used as safety disconnects since they are not fail-safe. Use only the AC line for this purpose.

Be sure to follow all instructions carefully. Fire and/or electrocution can result due to improper use of this product.

It is the responsibility of the equipment manufacturer and individual installer to supply this Safety Warning to the ultimate end user of this product.

### DESCRIPTION

The Auto/Manual Switch assembly is designed for installation on the front cover of the KBAC inverters. It is used to select either the Main Speed Potentiometer for "manual operation" or a remote voltage following analog signal for "automatic operation." It is suggested that the SIAC Signal Isolator / Run Relay option (Part No. 9488) be used with the Auto/Manual Switch assembly to provide signal isolation between the signal source and the KBAC.

### MOUNTING



**WARNING!** Make sure that the AC line is disconnected before installing the Auto/Manual Switch assembly.

1. Remove the rubber hole plug assembly that covers the Auto/Manual position by unscrewing the retainer nut that is located on the inside of the front cover.
2. Align the switch in the front cover hole and mount the Auto/Manual Switch assembly using the rubber boot that is provided. Do not over tighten the rubber boot hex nut. See Figure 1.

**Note:** The switch bushing should protrude approximately 0.15" (3.8mm) through the front cover.

3. Install the SIAC onto the PC board in accordance with the SIAC Installation and Operating Instructions Manual.

### WIRING

1. Remove the jumper assembly that is installed on the FWD and STOP terminals of the PC board. Using pliers, gently rock the female terminals back and forth horizontally while pulling them upward. See Figure 2.
2. Remove the orange Main Speed Potentiometer wire that is connected to the P2 terminal of the PC board. Using pliers, gently rock the female terminal back and forth vertically while pulling it upward. See Figure 3.
3. Install the blue wire from the center of the Auto/Manual Switch assembly to the P2 terminal on the PC board. See Figures 4A and 4B, on reverse side.
4. Install the orange wire from the Main Speed Potentiometer assembly (removed in step 2) to the top terminal of the Auto/Manual Switch assembly. See Figures 4A and 4B, on reverse side.
5. Install the green wire from the SIAC CONN1 to the lower terminal of the Auto/Manual Switch assembly. See Figures 4A and 4B, on reverse side.

FIGURE 1 – MOUNTING THE AUTO/MANUAL SWITCH

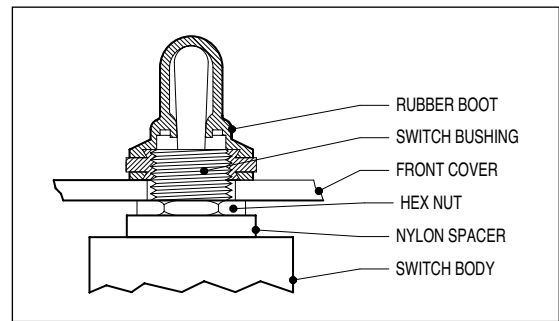


FIGURE 2 – JUMPER ASSEMBLY

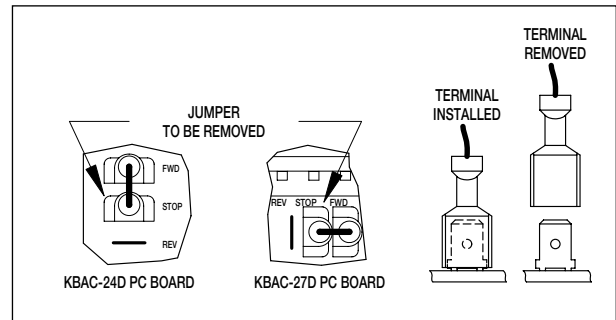
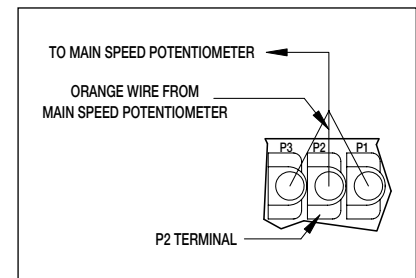


FIGURE 3 – MAIN SPEED POTENTIOMETER



# INSTALLATION INSTRUCTIONS

## AUTO/MANUAL SWITCH Part No. 9481A

for Model KBAC-24D & KBAC-27D Inverters with SIAC Signal Isolator / Run Relay

FIGURE 4A – KBAC-24D AUTO/MANUAL SWITCH WITH SIAC CONNECTION DIAGRAM

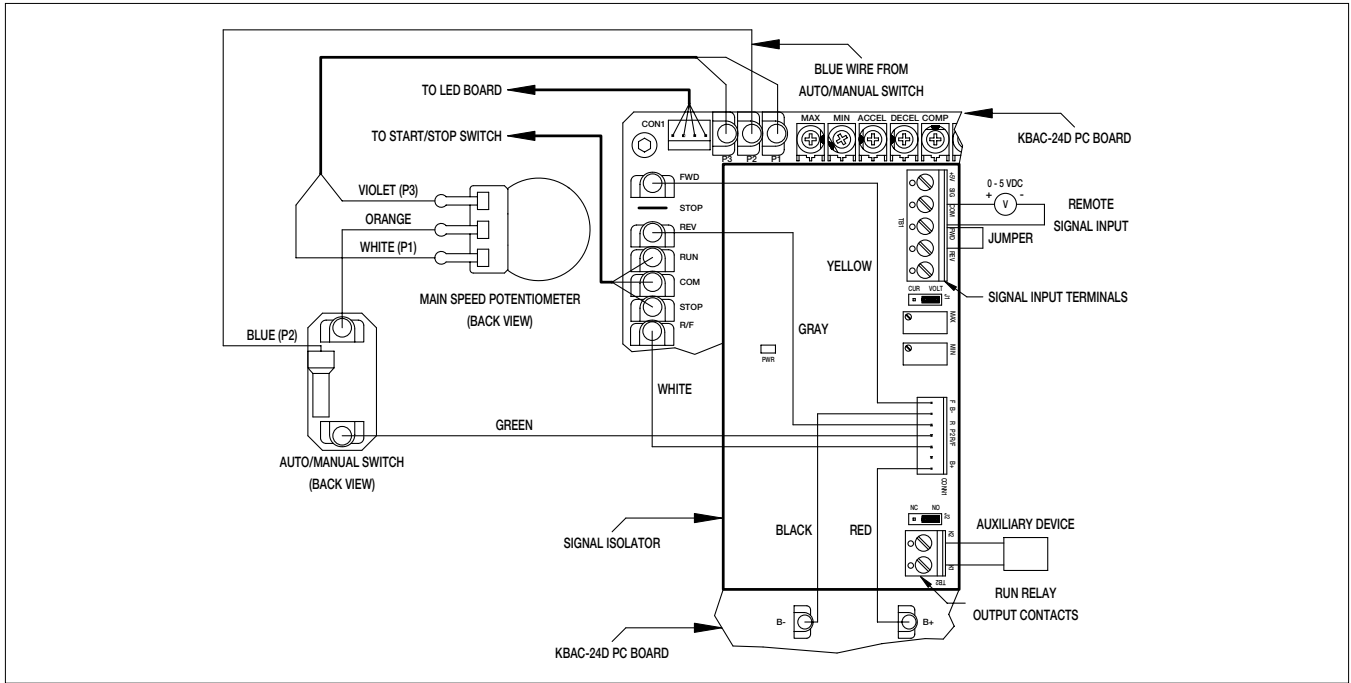
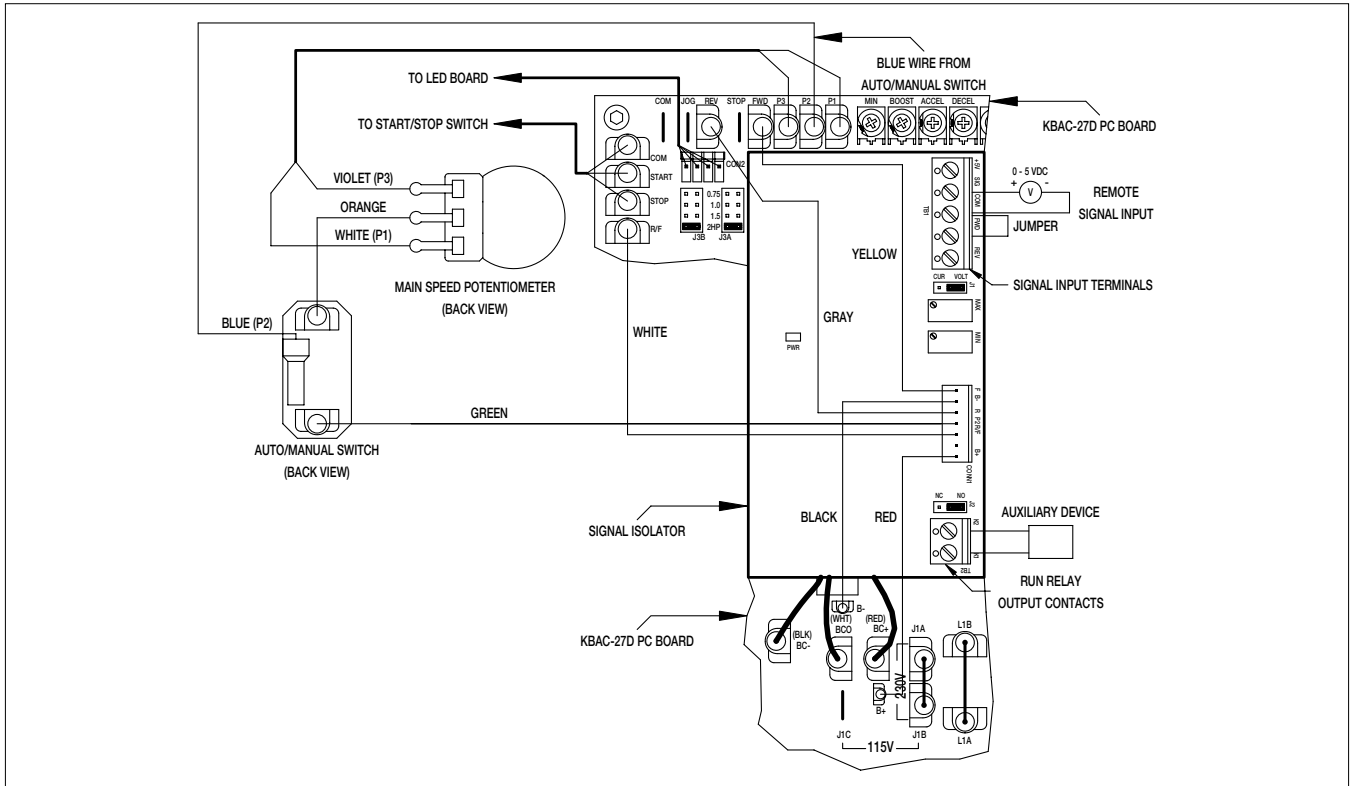


FIGURE 4B – KBAC-27D AUTO/MANUAL SWITCH WITH SIAC CONNECTION DIAGRAM



KB ELECTRONICS, INC.

12095 NW 39th Street, Coral Springs, FL 33065-2516 • (954) 346-4900 • Fax (954) 346-3377

Outside Florida Call Toll Free (800) 221-6570 • E-mail – info@kbelectronics.com

www.kbelectronics.com